

The image features a dark blue map of Eurasia with a highlighted rail route. The route starts at Kouvola in Finland, goes to St. Petersburg, then to Moscow/Kaluga, and continues east through various cities in China including Zhengzhou, Beijing, and Shanghai, ending at Hong Kong. Other cities like Vladivostok, Xi'an, and Kunming are also marked on the map. The text 'NORTH EURASIA GROWTH PLATFORM' and its Chinese equivalent '北欧亚大陆发展平台' is overlaid on the map.

NORTH EURASIA GROWTH PLATFORM

北欧亚大陆发展平台

Based on Railgate Finland China Express
Container Train Connection
中欧班列集装箱列车路线

Round Table Bryssel 28-11-2019

Kouvola[®]innovation

28.11.2019

KOUVOLA

ST PETERSBURG

MOSCOW / KALUGA

MINSK

Kouvola Innovation Oy Finland

HONG KONG

MANZHOULI

VLADIVOSTOK

XI'AN

BEIJING

ZHENGZHOU

Kouvola[®]

www.kinno.fi

Kouvola[®]innovation

2019-12-05

Kouvola innovation oy

- Established in 2009 after a merger of 6 neighboring municipalities
- Business promotion and development company owned by the City of Kouvola
- Our aim is to improve the vitality of the region
- We do this by
 - improving the business environment
 - supporting starting and operating businesses and their development
 - helping businesses to relocate to the area

Kouvola Innovation in figures

Personnel

ca. 40

Turnover

ca. 8

Million Euro

Sources of Financing:

City of Kouvola and EU project funding

In 2018:

- 316 new companies established in the Kouvola region
- 809 clients in the Business Advisory Services
- Ca. 1550 service contacts

“ONE BELT, ONE ROAD”(OBOR)-INITIATIVE 一带一路倡议



- Chinese investment programme aimed at increasing trade between Asia and the rest of the world, particularly Europe
- 中国投资计划，目标是提高亚洲和世界其他地区，尤其是欧洲之间的贸易
- Covers about 60 countries
- 覆盖大约60个国家
- Eurasian land bridge is one of the new main routes
- 亚欧大陆桥是新的主要路线
- Kouvola- Xi'an container train connection is the Nordic version of the Eurasian land bridge
- 科沃拉-西安中欧班列是北欧版的欧亚大陆桥

RAILGATE FINLAND CHINA EXPRESS

芬兰中国中欧班列



RAILWAY CORRIDOR FROM CHINA TO EUROPE

从中国到欧洲的铁路走廊

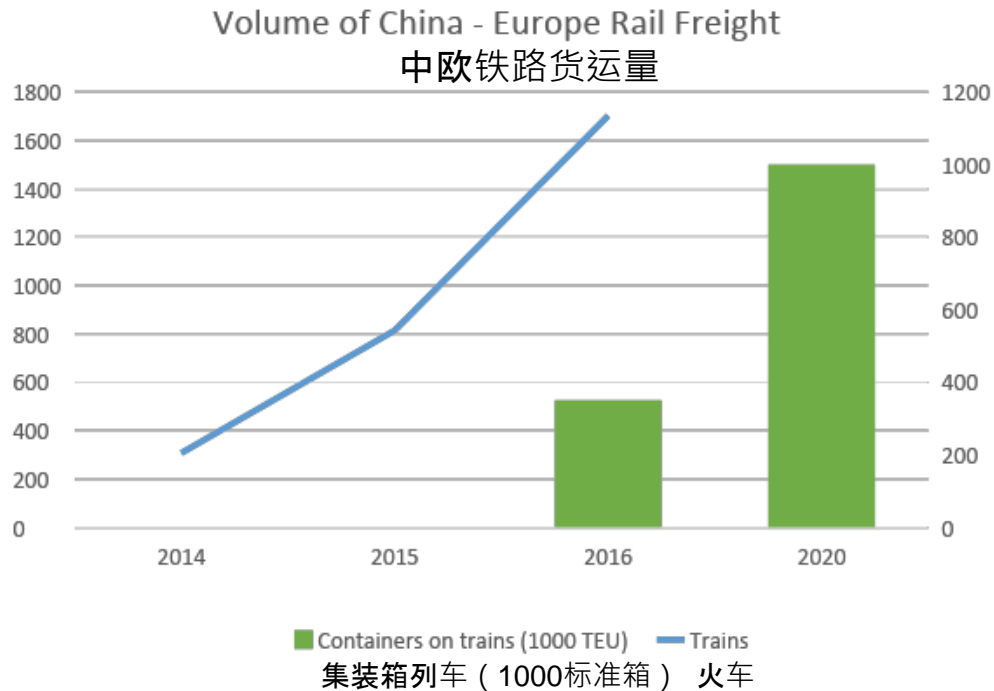
DISTANCE - 9111 KM
距离 - 9111 公里

DELIVERY TIME - 10-12 DAYS
运送时间 - 10-12 天



EU-CHINA TRANSPORTATION VOLUMES GROW EXPONENTIALLY

欧盟-中国运输量倍数增长



The annual volume of China - Europe rail freight is expected to be 1 Million TEU by 2020. The current annual rail freight volume on the route is over 400 000 TEU

预计2020年，中欧铁路货运量将达到100万标准箱。目前该线路的年铁路货运量约为40万标准箱

NORTH EURASIA GROWTH PLATFORM

北欧大陆发展平台

- Business and investment opportunities created by utilizing the Kouvola-Xi'an container train-based logistic chains
- 通过科沃拉 - 西安集装箱列车物流链创造商业和投资机会
- Development companies: International Trade and Logistic Park (ITL) in Xi'an and Kouvola Innovation Oy in Kouvola (development company fully owned by the City of Kouvola)
- 发展公司：西安国际港务区（ITL）和科沃拉改革集团有限公司
- （科沃拉市全资拥有的发展公司）
- Both ends of the line provide building grounds for development, skilled labour and ideal inland location for distribution/supply in China and Northern Europe respectively
- 该线路的两端提供了发展的基础，熟练的劳动力以及理想的内陆位置，分布/供应到中国 and 北欧市场
- The backbone is the fastest EU-China container block train connection
- 主架构为欧盟与中国最快的集装箱火车连接管道

COMPETITIVE ADVANTAGE

竞争优势

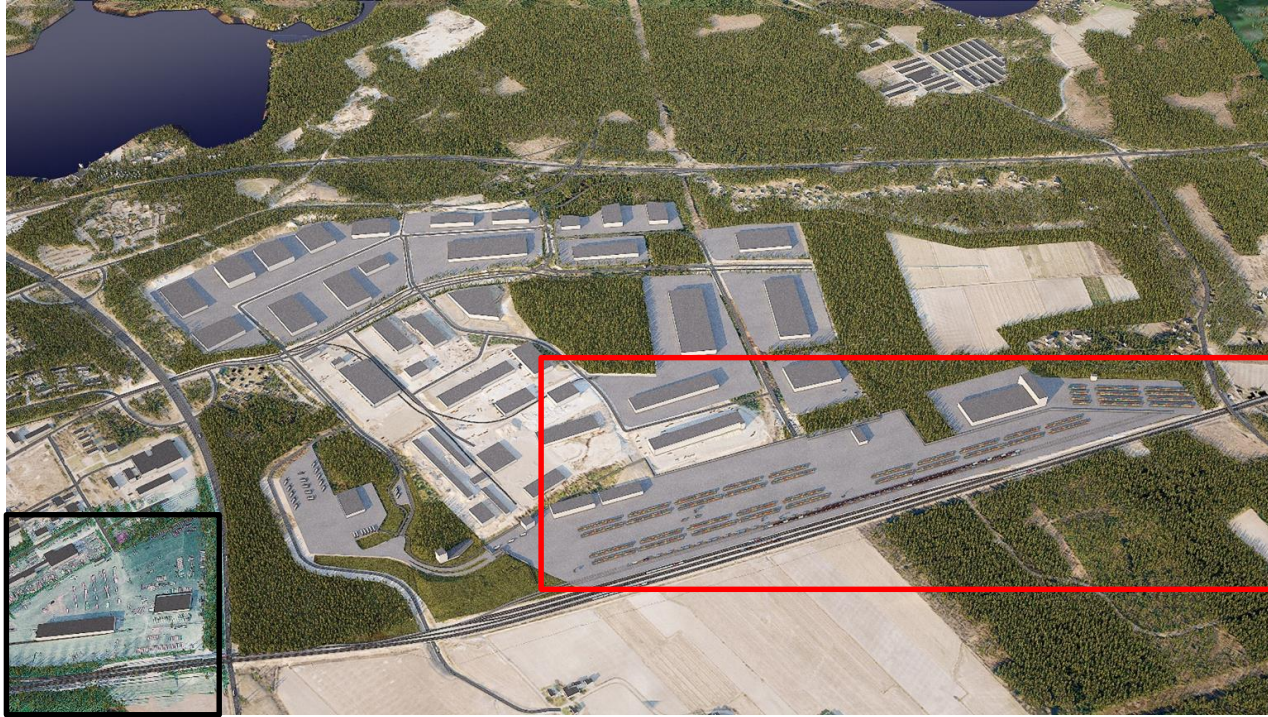
- Same rail gauge in Finland, Russia and Kazakhstan => one transshipment less than on European routes
- 芬兰、俄罗斯和哈萨克斯坦拥有同样的轨距=>比其他中欧班列线路少了一个转运过程
- Evades congestion that slows down Central European routes
- 避免其他繁忙的中欧路线
- Shortest EU-China route both in distance and time
- 最短距离和时间的欧盟 - 中国线路
- Finland-Russia border is the only EU/Russia railway border with all-digital data transfer and very standardized formalities
- 芬兰与俄罗斯的边境是欧盟/俄罗斯铁路边界线中唯一拥有全数字化数据传输且非常标准化程序
- Nordic industrial exports to China allow full loading of trains into both directions east and west
- 北欧工业出口到中国，让列车达到双向的满载量
- Was ranked the best in the Nordic countries in 2016 (Deutsche GVZ-Gesellschaft)
- 在2016年被评为北欧最佳国家（德国物流园区）

KOUVOLA INTERMODAL TERMINAL AREA

- Present capacity about 55.000 TEU/a
- 目前容量约55,000 标准箱 / 年
- Near term expansion to 250.000 TEU/a
- 近期扩张至25万标准箱 / 年
- Current development plan includes 300 hectares on top of the present 200 hectares
- 目前的发展计划包括目前的200公顷加上300公顷土地开发
- Railway connections to 4 directions, highways to 6 directions
- 4个方向的铁路连接，6个方向的高速公路
- Present terminal houses about 100 logistics companies
- 目前的枢纽站拥有大约100家物流公司



IN THE NEAR FUTURE 不久的将来



KOUVOLA HAS THE LUXURY OF SPACE

科沃拉拥有广阔的土地



10.11.2017 FIRST TRAIN FROM KOUVOLA TO XI'AN



THANK YOU!

谢谢！

Simo Päivinen
Development Director

Kouvola[®]innovation

WWW.KINNO.FI

Paraatikenttä 4
FI-45100 Kouvola