



The background is a dark map of Eurasia. A dashed white line represents a rail route starting from Kouvola in Finland, passing through St. Petersburg, Moscow/Kaluga, and various cities in China (Khabarovsk, Harbin, Zhengzhou, Beijing, Shanghai, Hong Kong) to Vladivostok. A solid orange line highlights a specific segment of this route from Kouvola to Shanghai and Hong Kong.

# NORTH EURASIA GROWTH PLATFORM

## 北欧亚大陆发展平台

Based on Railgate Finland China Express  
Container Train Connection  
中欧班列集装箱列车路线

Round Table Bryssel 28-11-2019

Kouvola<sup>®</sup>innovation

28.11.2019

KOUVOLA

ST PETERSBURG

MOSCOW / KALUGA

MINSK

# Kouvola Innovation Oy Finland

HONG KONG

MANZHOULI

VLADIVOSTOK

XI'AN

BEIJING

ZHENGZHOU

**Kouvola**®

[www.kinno.fi](http://www.kinno.fi)

Kouvola®innovation

2019-12-05

# Kouvola innovation oy

- Established in 2009 after a merger of 6 neighboring municipalities
- Business promotion and development company owned by the City of Kouvola
- Our aim is to improve the vitality of the region
- We do this by
  - improving the business environment
  - supporting starting and operating businesses and their development
  - helping businesses to relocate to the area

# Kouvola Innovation in figures

**Personnel**

ca. 40

**Turnover**

ca. 8

Million Euro

**Sources of Financing:**

City of Kouvola and EU project funding

**In 2018:**

- 316 new companies established in the Kouvola region
- 809 clients in the Business Advisory Services
- Ca. 1550 service contacts

# “ONE BELT, ONE ROAD”(OBOR)-INITIATIVE 一带一路倡议



- Chinese investment programme aimed at increasing trade between Asia and the rest of the world, particularly Europe
- 中国投资计划，目标是提高亚洲和世界其他地区，尤其是欧洲之间的贸易
- Covers about 60 countries
- 覆盖大约60个国家
- Eurasian land bridge is one of the new main routes
- 亚欧大陆桥是新的主要路线
- Kouvola- Xi'an container train connection is the Nordic version of the Eurasian land bridge
- 科沃拉-西安中欧班列是北欧版的欧亚大陆桥

# RAILGATE FINLAND CHINA EXPRESS

## 芬兰中国中欧班列



# RAILWAY CORRIDOR FROM CHINA TO EUROPE

## 从中国到欧洲的铁路走廊

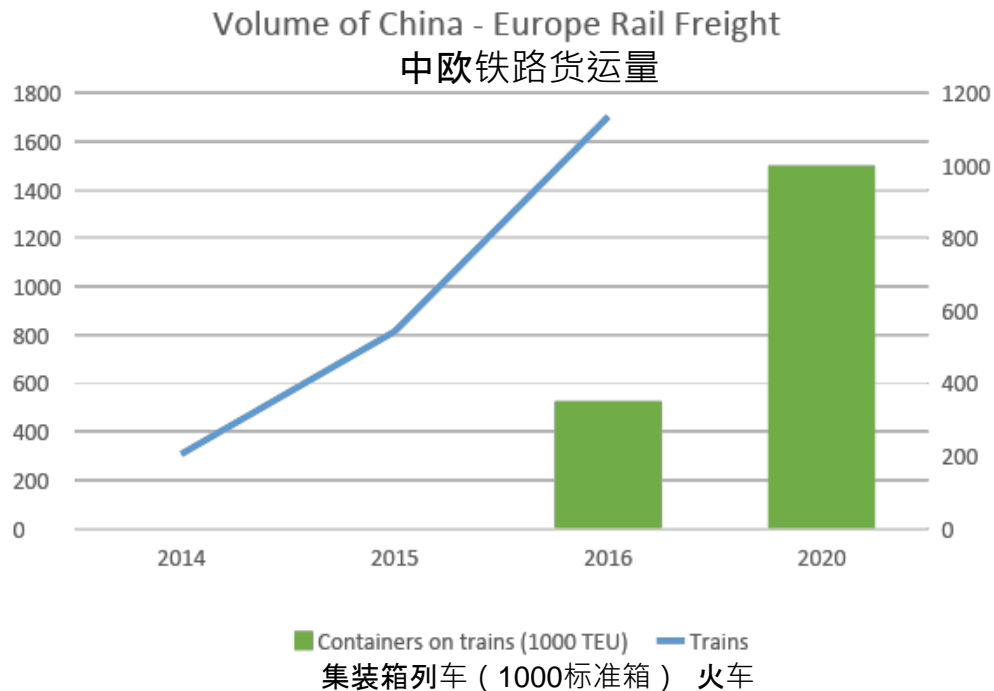
**DISTANCE - 9111 KM**  
距离 - 9111 公里

**DELIVERY TIME - 10-12 DAYS**  
运送时间 - 10-12 天



# EU-CHINA TRANSPORTATION VOLUMES GROW EXPONENTIALLY

## 欧盟-中国运输量倍数增长



The annual volume of China - Europe rail freight is expected to be 1 Million TEU by 2020. The current annual rail freight volume on the route is over 400 000 TEU

预计2020年，中欧铁路货运量将达到100万标准箱。目前该线路的年铁路货运量约为40万标准箱



# NORTH EURASIA GROWTH PLATFORM

## 北欧大陆发展平台

- Business and investment opportunities created by utilizing the Kouvola-Xi'an container train-based logistic chains
- 通过科沃拉 - 西安集装箱列车物流链创造商业和投资机会
- Development companies: International Trade and Logistic Park (ITL) in Xi'an and Kouvola Innovation Oy in Kouvola (development company fully owned by the City of Kouvola)
- 发展公司：西安国际港务区（ITL）和科沃拉改革集团有限公司
- （科沃拉市全资拥有的发展公司）
- Both ends of the line provide building grounds for development, skilled labour and ideal inland location for distribution/supply in China and Northern Europe respectively
- 该线路的两端提供了发展的基础，熟练的劳动力以及理想的内陆位置，分布/供应到中国 and 北欧市场
- The backbone is the fastest EU-China container block train connection
- 主架构为欧盟与中国最快的集装箱火车连接管道

# COMPETITIVE ADVANTAGE

## 竞争优势

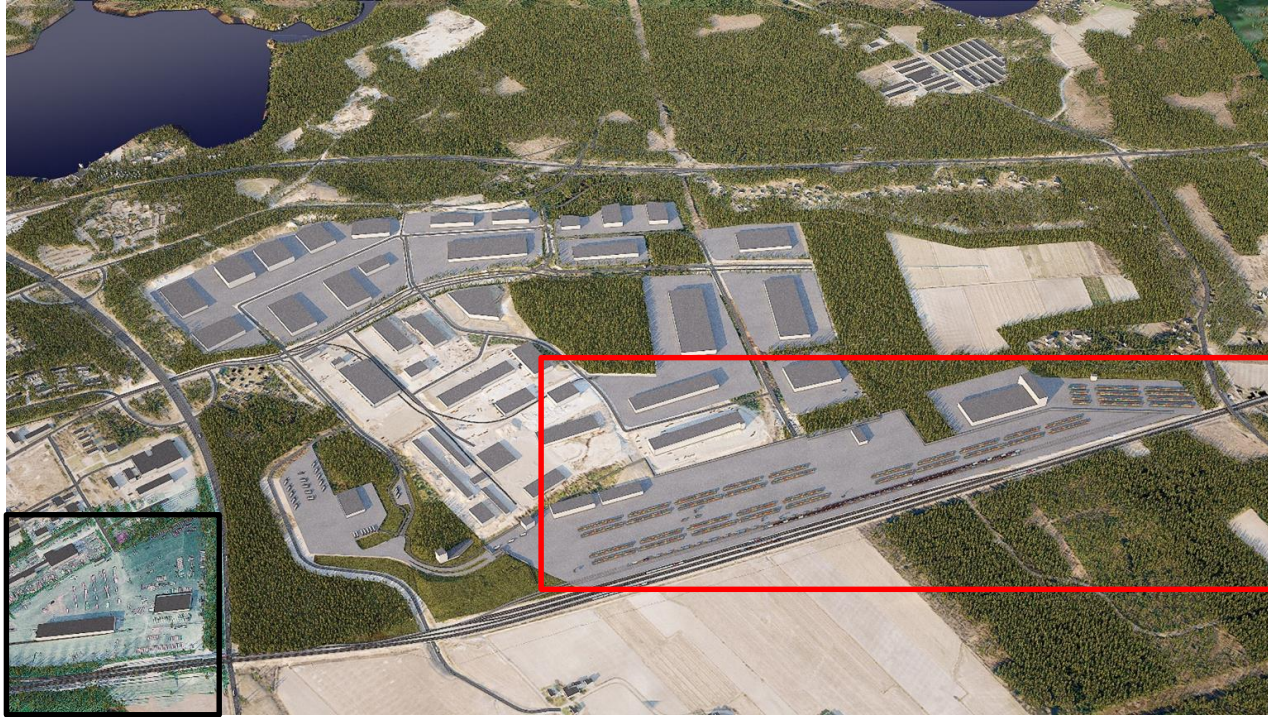
- Same rail gauge in Finland, Russia and Kazakhstan => one transshipment less than on European routes
- 芬兰、俄罗斯和哈萨克斯坦拥有同样的轨距=>比其他中欧班列线路少了一个转运过程
- Evades congestion that slows down Central European routes
- 避免其他繁忙的中欧路线
- Shortest EU-China route both in distance and time
- 最短距离和时间的欧盟 - 中国线路
- Finland-Russia border is the only EU/Russia railway border with all-digital data transfer and very standardized formalities
- 芬兰与俄罗斯的边境是欧盟/俄罗斯铁路边界线中唯一拥有全数字化数据传输且非常标准化程序
- Nordic industrial exports to China allow full loading of trains into both directions east and west
- 北欧工业出口到中国，让列车达到双向的满载量
- Was ranked the best in the Nordic countries in 2016 (Deutsche GVZ-Gesellschaft)
- 在2016年被评为北欧最佳国家（德国物流园区）

# KOUVOLA INTERMODAL TERMINAL AREA

- Present capacity about 55.000 TEU/a
- 目前容量约55,000 标准箱 / 年
- Near term expansion to 250.000 TEU/a
- 近期扩张至25万标准箱 / 年
- Current development plan includes 300 hectares on top of the present 200 hectares
- 目前的发展计划包括目前的200公顷加上300公顷土地开发
- Railway connections to 4 directions, highways to 6 directions
- 4个方向的铁路连接，6个方向的高速公路
- Present terminal houses about 100 logistics companies
- 目前的枢纽站拥有大约100家物流公司



# IN THE NEAR FUTURE 不久的将来



# KOUVOLA HAS THE LUXURY OF SPACE

## 科沃拉拥有广阔的土地



# 10.11.2017 FIRST TRAIN FROM KOUVOLA TO XI'AN



# THANK YOU!

# 谢谢！

Simo Päivinen  
Development Director

**Kouvola<sup>®</sup>innovation**

[WWW.KINNO.FI](http://WWW.KINNO.FI)

Paraatikenttä 4  
FI-45100 Kouvola