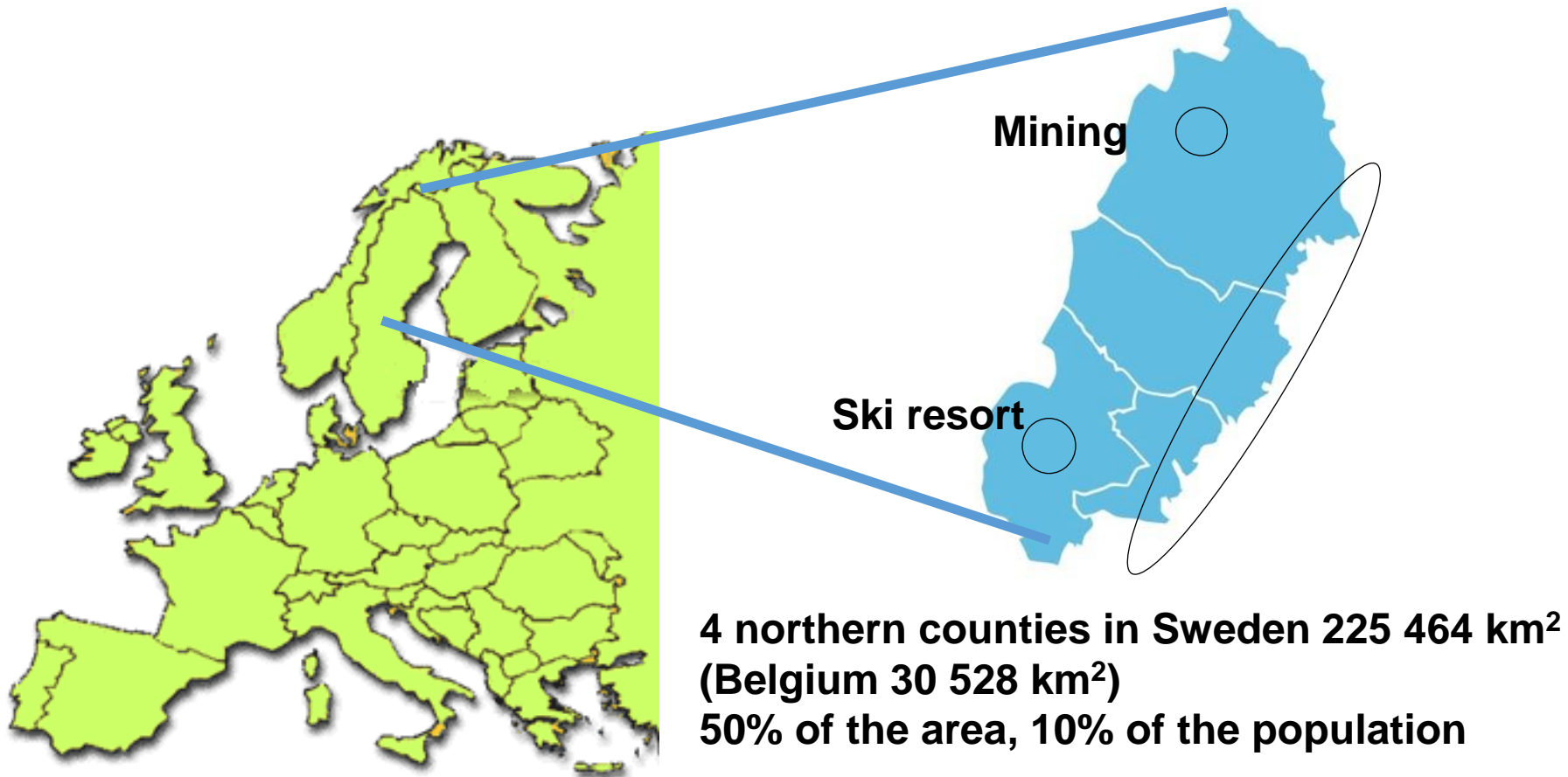


BioFuel Region

Our vision is to change the society in long-term process towards more

- Renewable energy in the transport sector
- Renewable energy and products based on forest biomass

BioFuel Region – where?



BioFuel Region™

BioFuel Region drivers



BioFuel Region™

Forestry has a turnover of 15 billion € (12% of Swedens BNP),
And employs 200 000 jobs within the forest industry

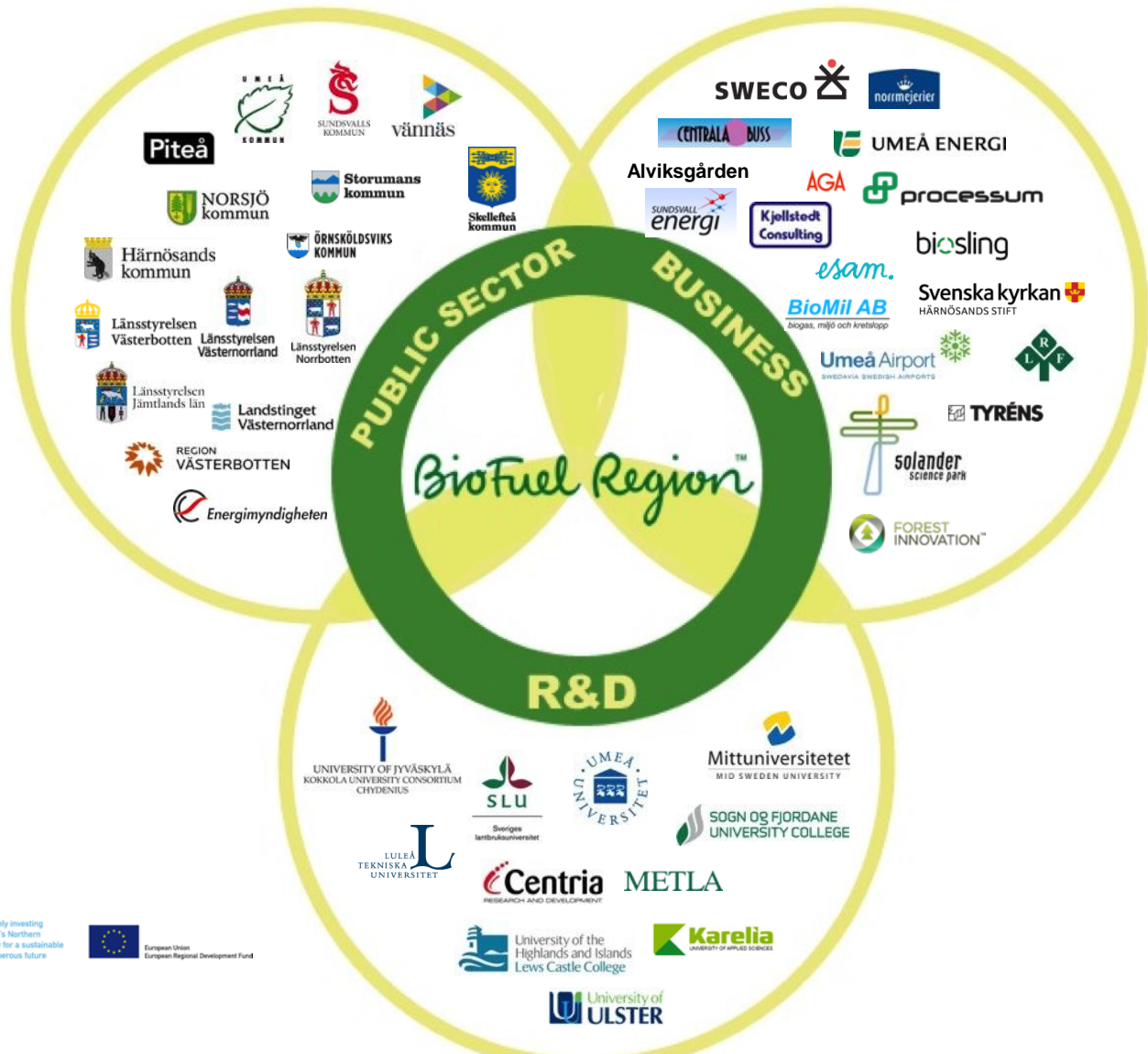
The forest volume increase every year by 20-30 %
after harvesting and storms

Biofuel Region stats

- 108,300 km² forest area
- 2,800 km² agricultural area
- 877,400 people
- 44 municipalities
- 4 counties
- 4 universities

BioFuel Region™

triple-helix model



Botnia-Atlantica™



Gränsöverskridande samarbete över fjäll och hav
Meret, vuoret ja rajat ylittävä yhteistyö
Grenseoverskridende samarbeid over fjell og hav
Cross-border cooperation over mountain and sea

www.botnia-atlantica.eu



Europeiska jordbruksfonden för landsbygdsutveckling: Europa investerar i landsbygdsområden



Innovatively Investing in Europe's Northern Periphery for a sustainable and prosperous future



European Union European Regional Development Fund

Several projects, on-going and planned:



Social Enterprises in Community
Renewable Energy

BioGaC
Trans-European Transport Network
Executive Agency



Electrical Vehicles

BioFuel Region™ Place Branding North Sweden

” North Sweden is a unique place for developing new products from forest ”



Umeå universitet



BIO4ENERGY



LULEÅ TEKNISKA UNIVERSITET
FORSKNING OCH UTBILDNING I VÄRDERKÄSS

BioFuel Region™



A non-profit strategic network to increase production and value of biogas in northern Sweden



- Communication
- Engagement
- Co-operation

Conclusions from roadmap Biogas in northern Sweden

- Raw material and market along the coast. Start here!
- Market WANT to change to sustainable renewable fuel
- Increased number of CNG filling stations – clusterwise – along the coast of Bothnia
- Refine existing biogas to biomethane
- Long-term policies is needed, national and EU

Cross-border cooperation is essential!





Biogas Norr

Project proposal BioGaC

Biomethane and LNG in the North for growth
and competitiveness in EU

Anna Säfvestad Albinsson

anna.albinsson@biofuelregion.se



REGION
VÄSTERBOTTEN

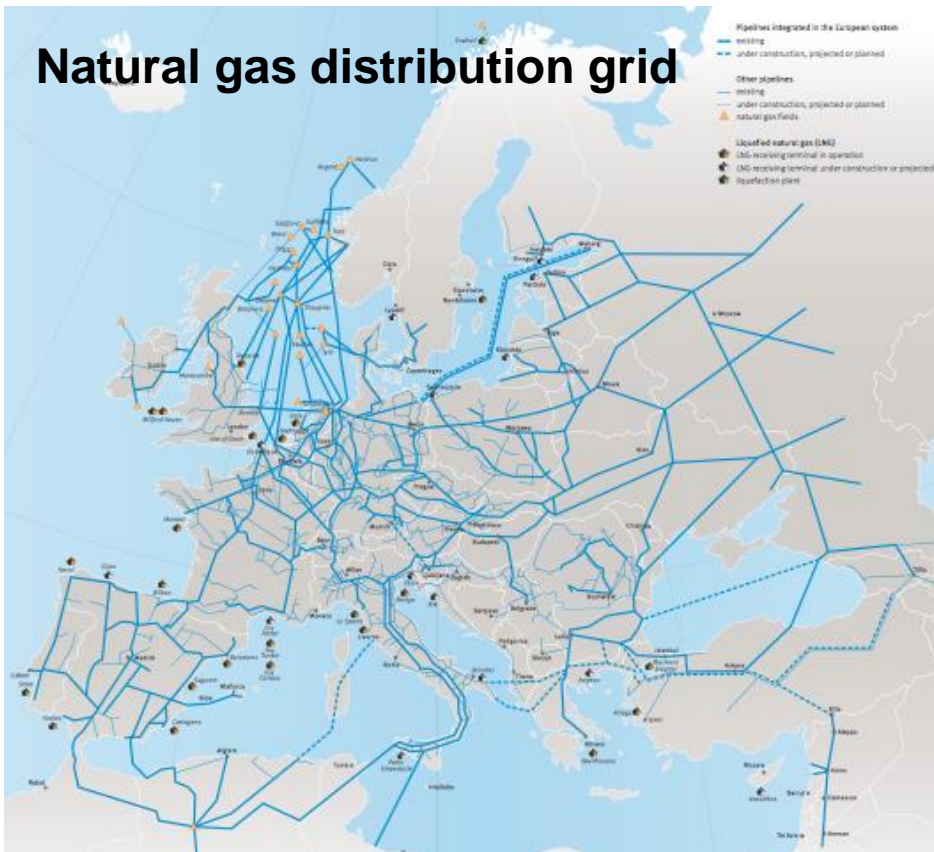


Co-financed by the European Union
Trans-European Transport Network (TEN-T)

BioFuel Region™

BioGaC – why?

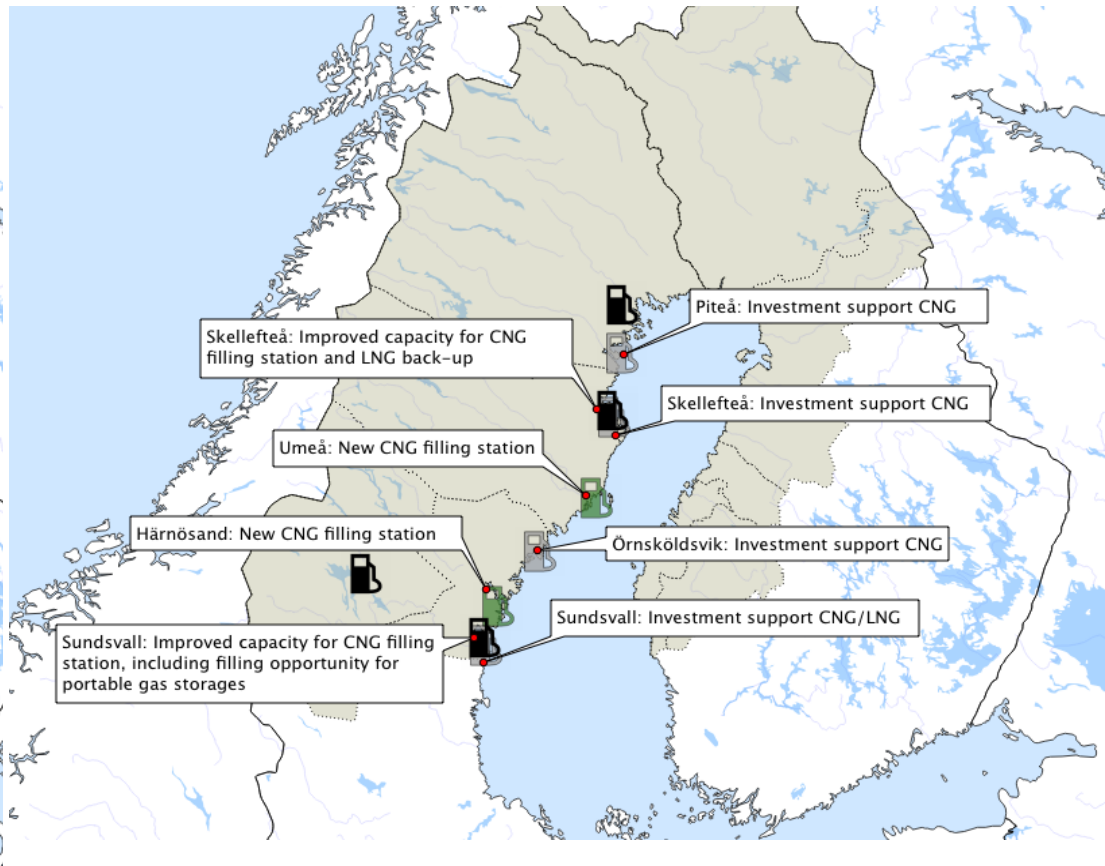
Natural gas distribution grid



CNG and bioCNG filling stations



BioGaC – what and where



Co-operation is fundamental!

We are interested in all project proposals
which will lead to our vision and goals

*Change the society in long-term process
towards more*

- Renewable energy in the transport sector
- Renewable energy and products based on forest biomass

Thank You for your attention!

Anna Säfvestad Albinsson

anna.albinsson@biofuelregion.se, 070 615 05 05

Natures Carbon Capture and Storage - We can use more of it!

BioFuel Region™

BioGaC budget 2014-2015

39 MSEK



TEN-T	19,6 MSEK
Region Västerbotten	2,4 MSEK
County of Västernorrland	2,4 MSEK
Partners	14,9 MSEK

Indication of approval in June 2014

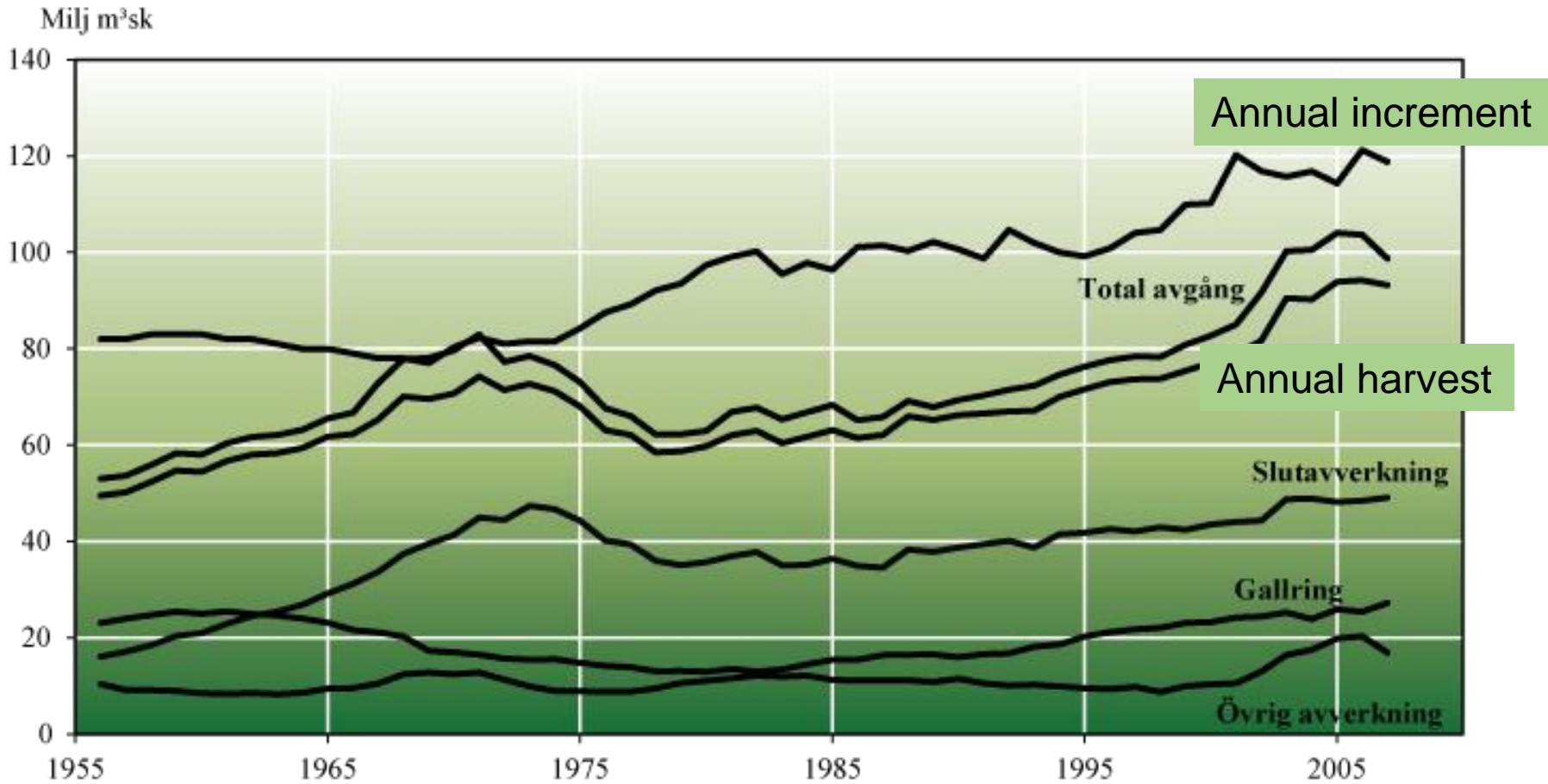
Partners:

Municipalities of Skellefteå, Piteå, Örnsköldsvik, Sundsvall and BioFuel Region, AGA, HEMAB, AC Fordonsgas AB

Supporters:

BDX, Sveriges Åkeriföretag Norr, Domsjö Fabriker, Sundsvall Logistikpark
Municipalities of Vännäs, Härnösand and Östersund, Västernorrland County Council

Annual increment and harvesting since 1955



BioFuel Region™

